

The process of designing and building the new MISTASSINIY 7-12 SCHOOL

1 SCHEMATIC DESIGN

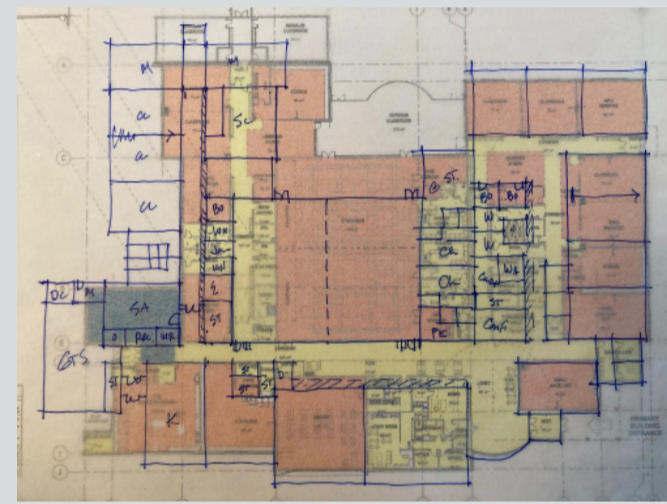
We start to design the building

VISION FOR THE SCHOOL
Safe, Inspirational Place of Learning, Community Hub



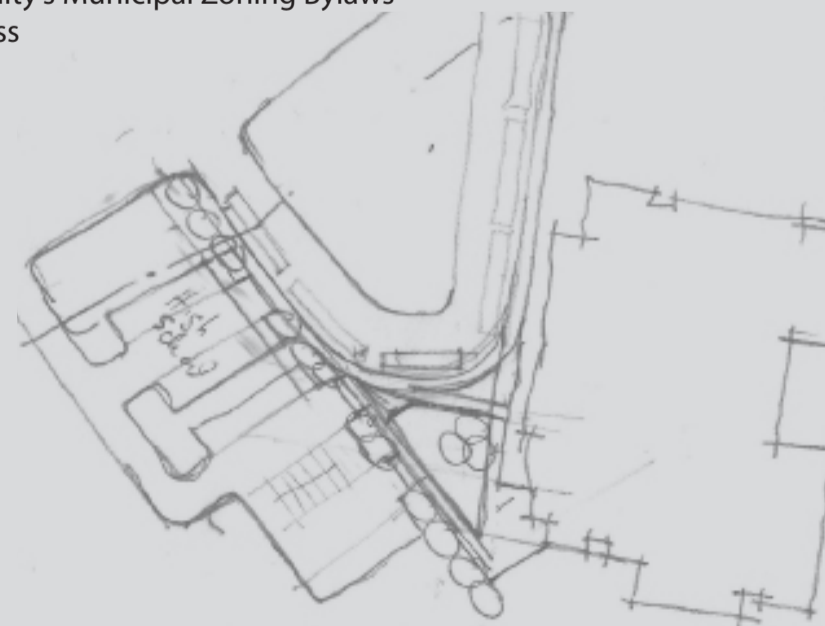
CONDITION FOR SATISFACTION
- School Division
- Students & Staff
- Alberta Infrastructure
- Alberta Education
- Cost
- Schedule

PROGRAM OF AREAS
- Alberta Education
- School Capital Manual
- Classrooms
- Science Rooms
- Music Rooms
- Art Room
- Gymnasium
- Learning Community
- Common Area
- Support Areas



PLANNING CONCEPTS
- Concept Floor Plans
- Elevation Concepts
- Building Envelope
- Sustainability Vision

SITE CONCEPTS
- MD of Opportunity's Municipal Zoning Bylaws
- Pedestrian Access
- Vehicle Traffic
- Bus Drop-off

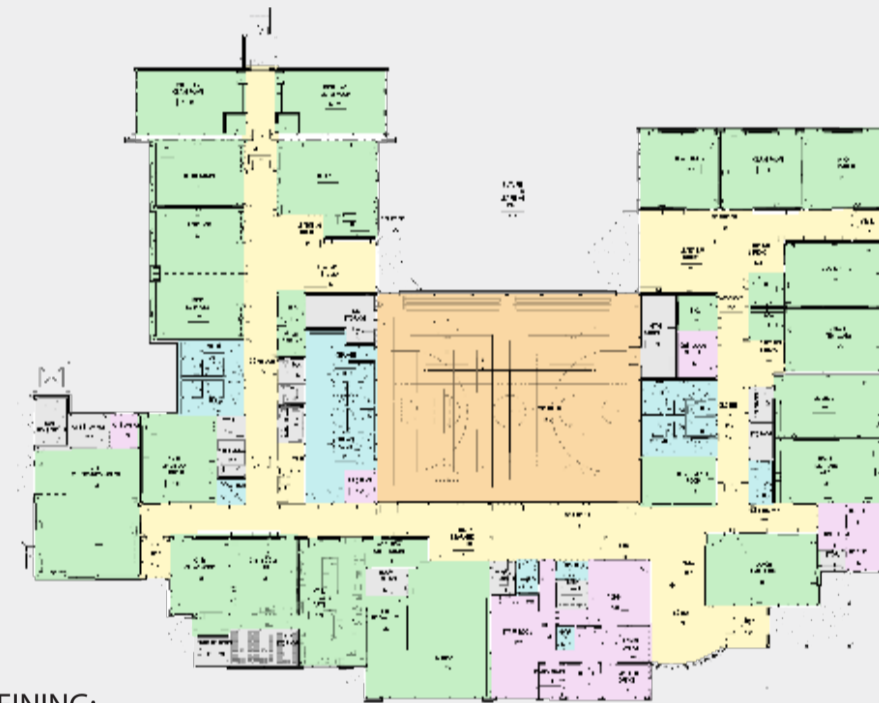


2 DESIGN DEVELOPMENT

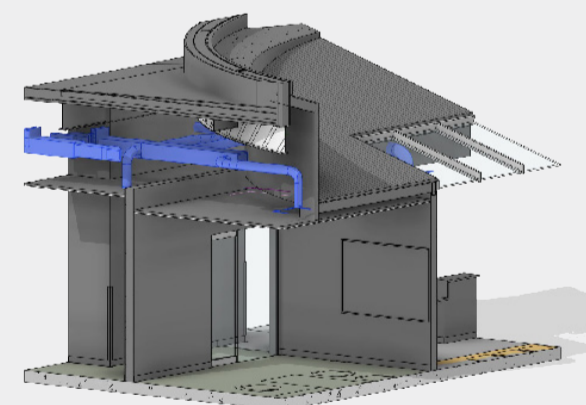
Refinement of the Design



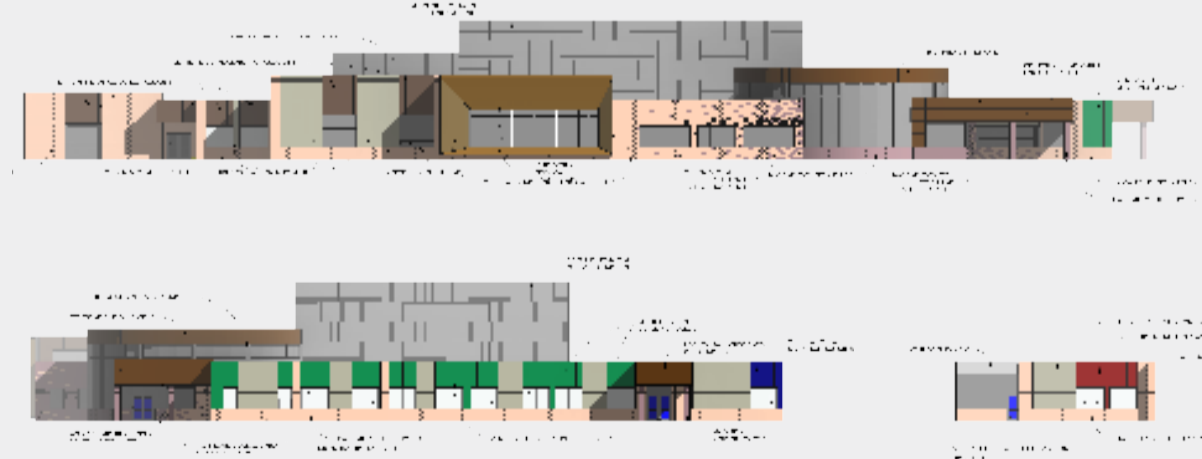
CONFIRMING:
- Zoning bylaw Conformance
- The School's Vision
- Conditions for Satisfaction
- Program Areas



REFINING:
- The Design Concept
- The Constructability Concept
- The Sustainability Vision (LEED V4)
- Lifesafety
- Building Code Conformance



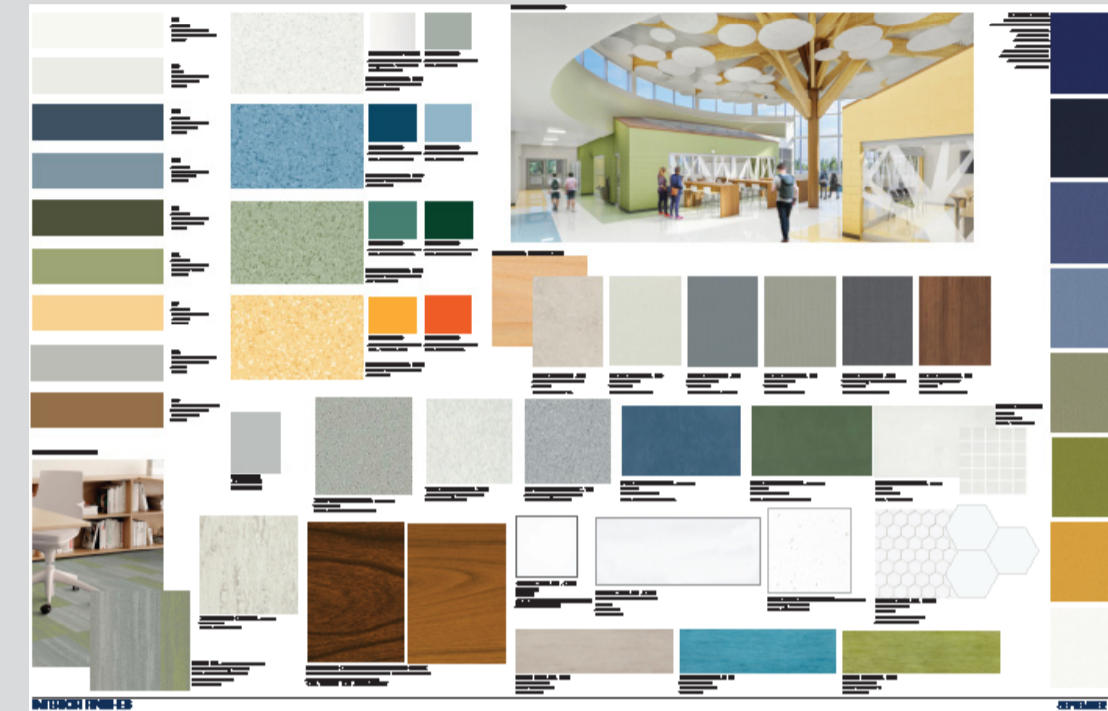
MAKING SURE THE DESIGN SATISFIES:
- The Municipal Bylaw
- National Building Code
- Alberta Education
- MD of Opportunity



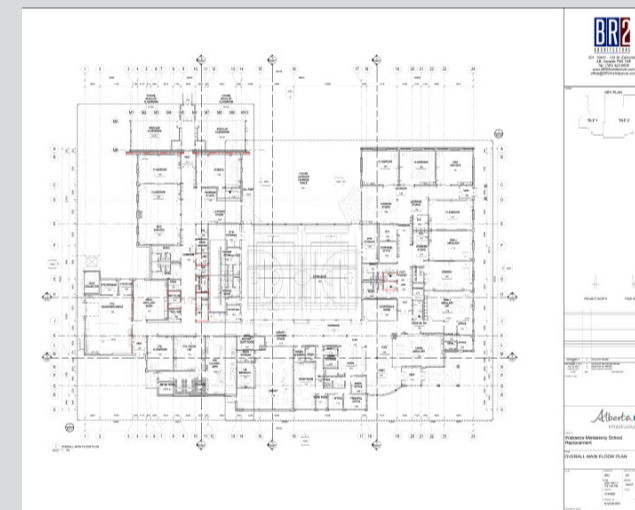
DEVELOPING THE DESIGN'S:
- Exterior and Interior Colour and Materials

3 CONSTRUCTION DRAWINGS

How do we build your School?



DETAILED CONSTRUCTION DRAWINGS:
- Architectural
- Structural Engineering
- Mechanical Engineering
- Electrical Engineering
- Civil Engineering
- Landscape Design
- Interior Design (Materials, Colours, Acoustics)



SUSTAINABLE DESIGN INITIATIVES:
- LEED V4
- Building Envelope Excellence
- Roof Membrane
- P.E.R.S.I.S.T Wall
- High Efficiency HVAC System
- Reduced Water Use Fixtures
- Efficient LED Lights
- National Energy Code of Canada for Buildings



SUSTAINABLE INITIATIVES:
- LEED Silver Certification

4 CONSTRUCTION

Lets build your School!

SITE:
- Site Services
- Parking Lots
- Sidewalks
- Building Structure

BUILDING STRUCTURE:
- Walls
- Roof
- Building Finishes
- Paint
- Floorings
- Ceilings

MECHANIAL AND ELECTRICAL SYSTEMS:
- Grills
- Thermostats
- Light Fixtures
- Switches
- Plugs

5 OPENING

Open the School to Students, Staff and Community

Students, Parents and Teachers are welcomed to their new School!

Architects
Interior Designers
Structural Engineers
Mechanical Engineers

Electrical Engineers
Civil Engineers
Kitchen Designers
Landscape Architects

...Worked Together with...

The Indigenous Community
The Greater Wabasca Community
Alberta Infrastructure
Northland School Division
School Administration

...To Design your new School

"Architecture is the Art, Science, and Business of Building"